



# 35<sup>th</sup> MIRW COURSES

26 OCTOBER-1 DECEMBER 2024



\*RC Vessel(s), Marks and buoy's locations for the races and the courses length will be approximately and shall not be grounds for a request for redress.



## COURSE 1

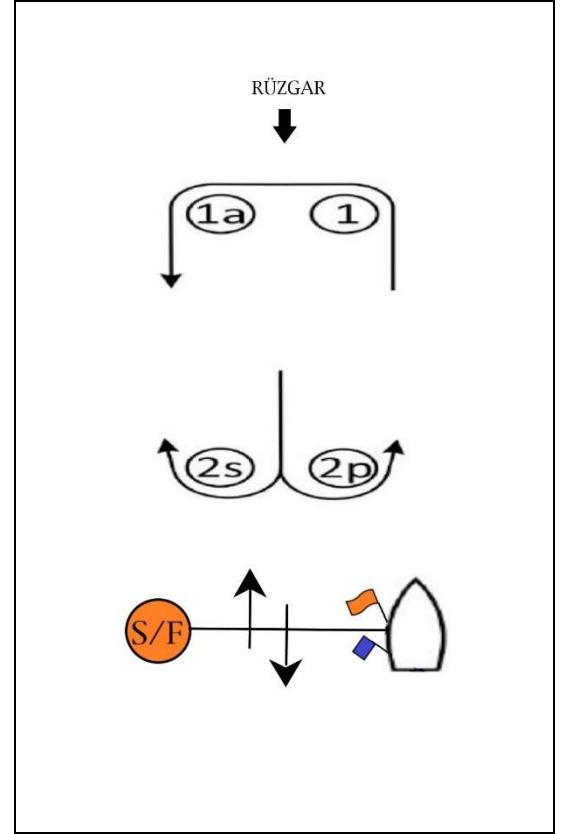


**Distance: ~ 6 nm.**

**Time Limit: 90 min.**

### **Course Description**

**Start- 1- 1 a- 2 s/p- 1- 1 a- Finish**



## COURSE 1-E

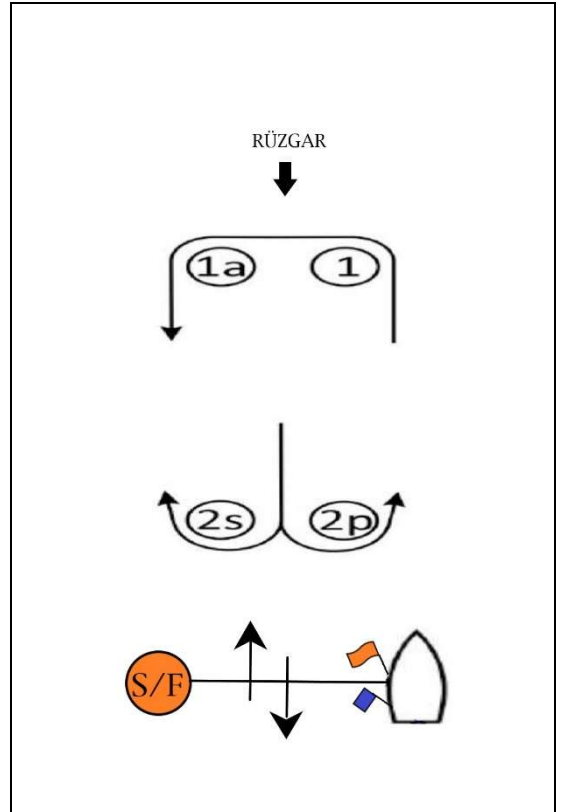


**Distance: ~ 9 nm.**

**Time Limit: 120 min.**

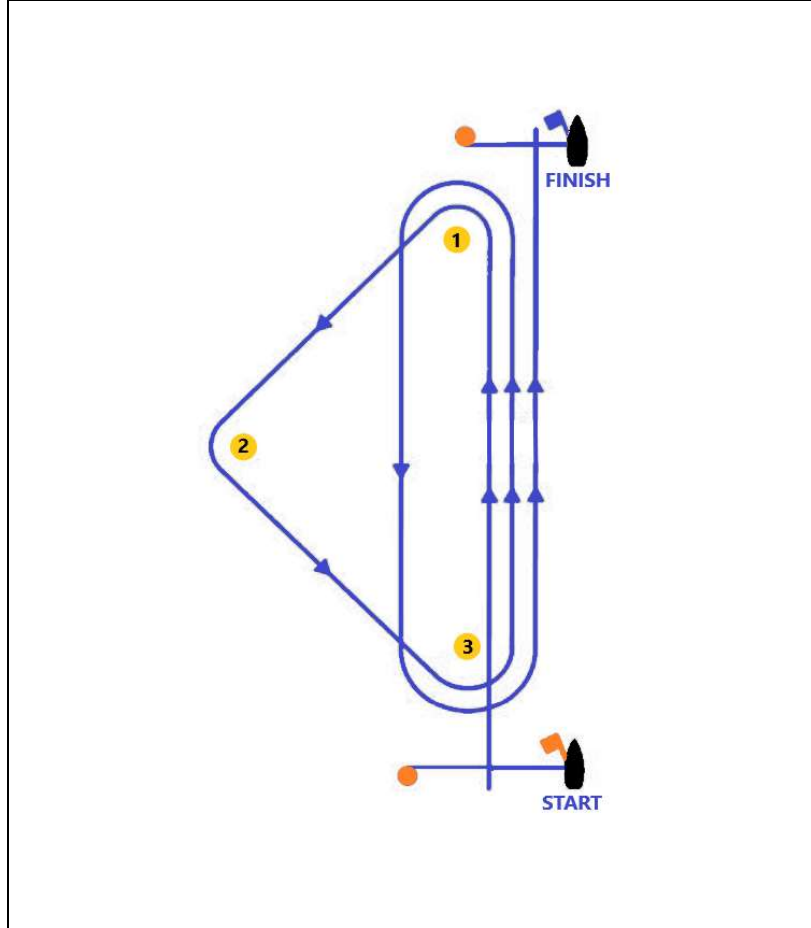
### **Course Description**

**Start- 1- 1 a- 2 s/p- 1- 1 a- 2 s/p- 1- 1 a- Finish**





## COURSE 2



**Distance: ~ 8 nm.**

**Time Limit: 120 min.**

### **Course Description**

**Start- #1- #2- #3- #1- #3- Finish.**



## M.I.Y.C Classical COURSE 4



**Distance: ~ 8 nm.**

**TIME LIMIT: 120 min.**

### MARKS AT STARBOARD

**ALPHA S(1)-2-3-1-2-F(1)**

**BRAVO S(2)-3-1-2-3-F(2)**

**CHARLIE S(3)-1-2-3-1-F(3)**

### MARKS AT PORT

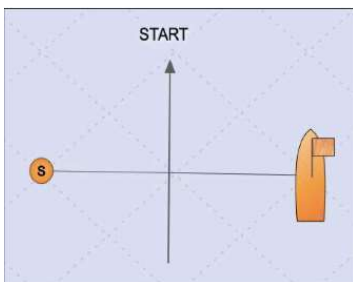
**DELTA S(1)-3-2-1-3-F(1)**

**ECHO S(2)-1-3-2-1-F(2)**

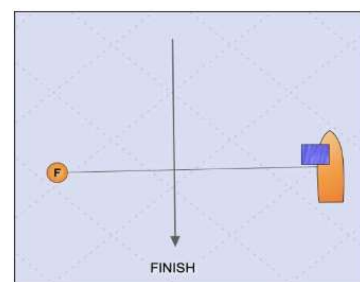
**FOXTROT S(3)-2-1-3-2-F(3)**

**Start/ Finish Line may be positioned (or set) behind the numbered marks.**

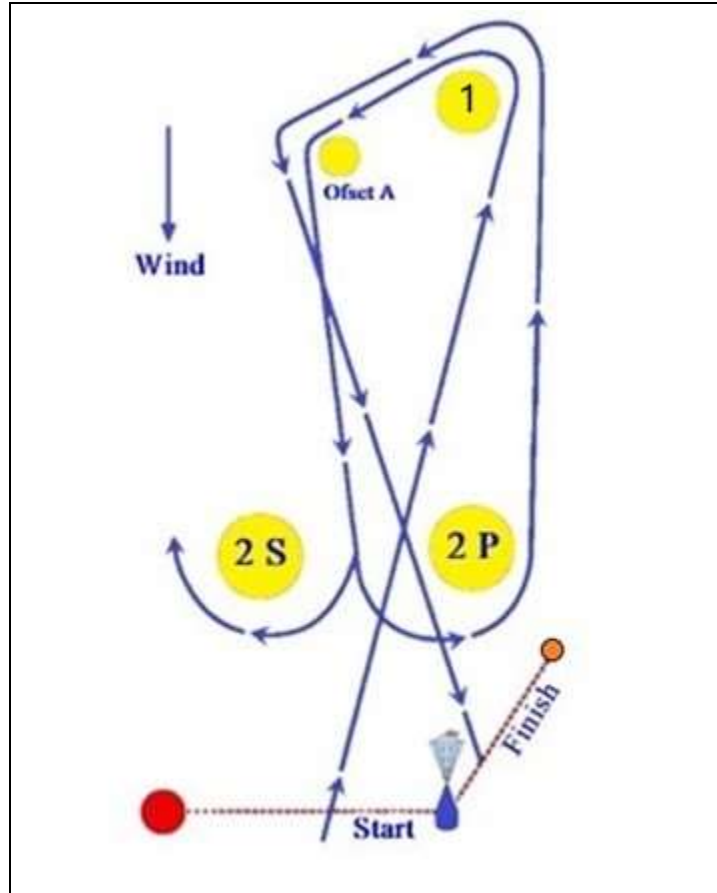
### **PIN END ON PORT (START)**



### **PIN END ON STARBOARD (FINISH)**



## Course 5 WW-LW



**Distance: ~ 6nm.**

**Time Limit: 90 min.**

### **Course Description**

**Start- #1- #1 a- 2 s/p- #1- #1 a- Finish.**

### COURSE 6



Distance 12 nm  
Time Limit 180 min.

START- Keçi Adası on Starboard- Kargataşı on Port-  
Yıldız Adası on Starboard- FİNİŞ

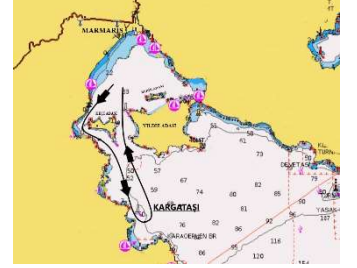


### COURSE 6-E



Distance 12 nm  
Time Limit 180 min.

START- Keçi Adası on Port- Kargataşı on Port-  
Yıldız Adası on Starboard- FİNİŞ



### COURSE 7



Distance 16 nm  
Time Limit 240 min.

START-Keçi Adası on Starboard- Kargataşı on port-  
Yalancı Şamandıra on Port- Yıldız Adası on Starboard- FİNİŞ

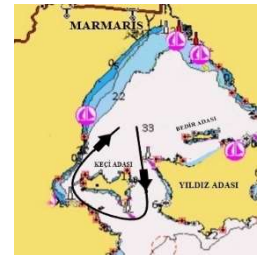


### COURSE 8



Distance 8 nm  
Time Limit 120 min.

START-Keçi Adası on Starboard- FİNİŞ

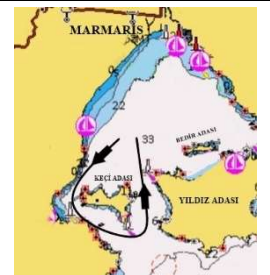


### COURSE 8-E

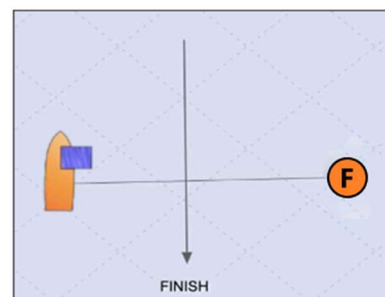
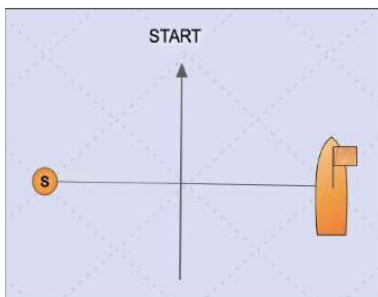


Distance 8 nm  
Time Limit 120 min.

START- Keçi Adası on Port- FİNİŞ



### START/FINISH LINE





# **COASTAL COURSE (OFFSHORE)-A**

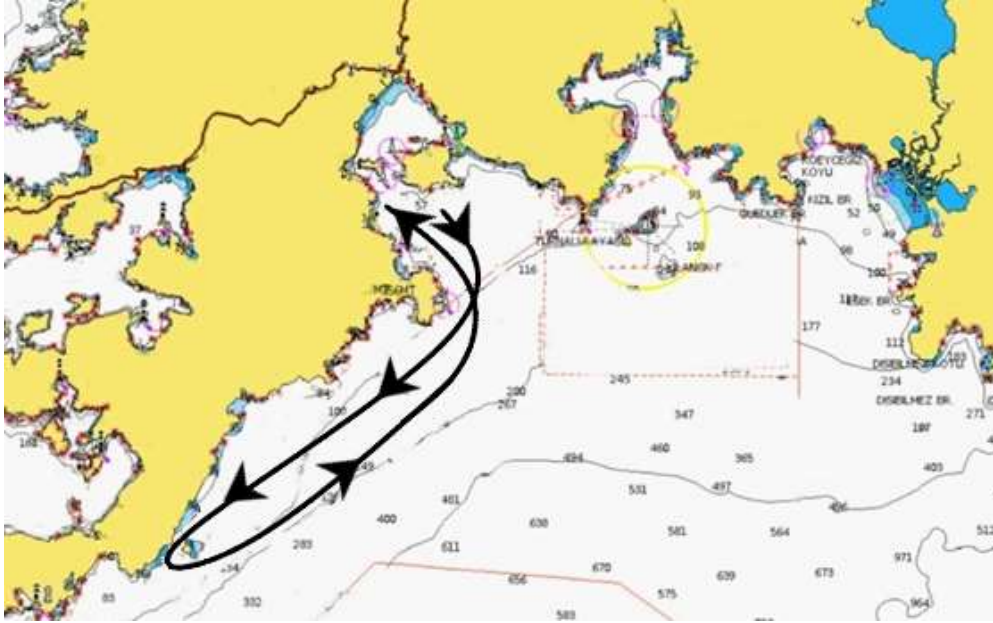


**ROUNDING ORDER**

**START-KIZILADA (PORT) FINISH**

**DİSTANCE :35 nm**

**TIME LIMIT: 15 hrs**



## **START/FINISH LINE**



## COASTAL COURSE (OFFSHORE)-B



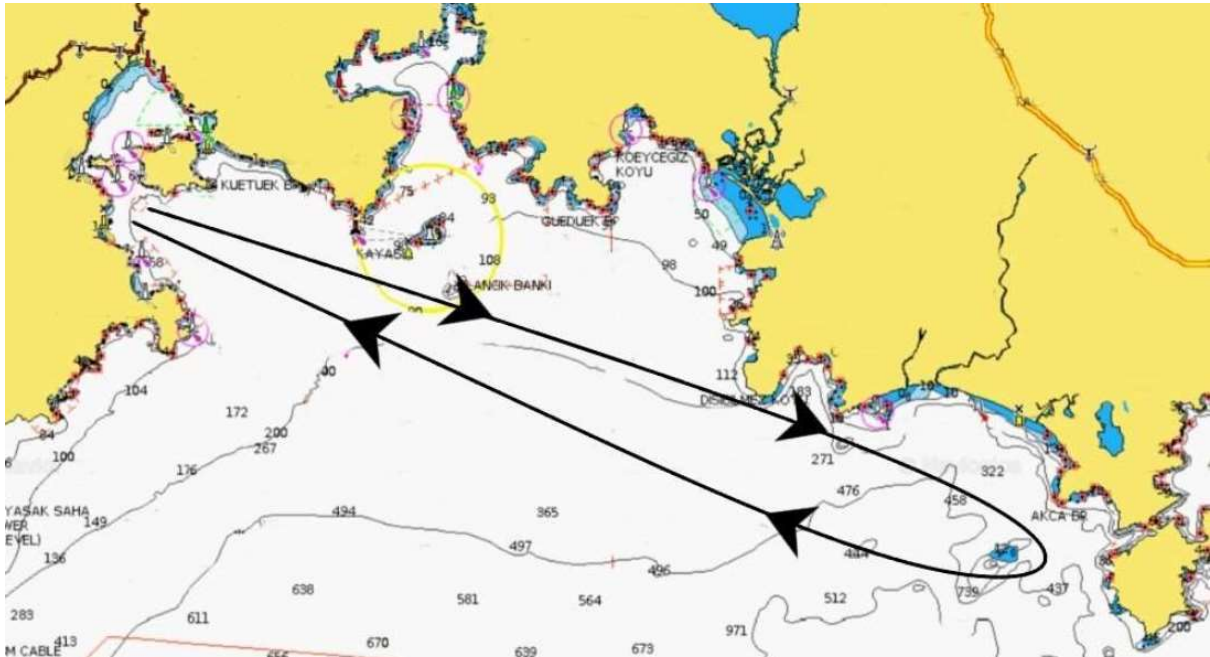
**ROUNDING ORDER**

**START-NAR ADASI (STARBOARD)-FINISH**

**DİSTANCE :50 nm**

**TIME LIMIT : 18 hrs**

**IT IS FORBIDDEN TO PASS THROUGH THE NORTH OF YILANCIK ADASI DURING THE RACE**



### START/FINISH LINE

